



## Morganza to the Gulf, Louisiana, Hurricane and Storm Damage Risk Reduction Project SEIS



### Appendix O – Non-Federal Sponsor Construction and Permitting

#### December 2025

The U.S. Department of Defense is committed to making its electronic and information technologies accessible to individuals with disabilities in accordance with Section 508 of the Rehabilitation Act (29 U.S.C. 794d), as amended in 1998. For persons with disabilities experiencing difficulties accessing content, please use the form @ <https://dodcio.defense.gov/DoDSection508/Section-508-Form/>. In this form, please indicate the nature of your accessibility issue/problem and your contact information so we can address your issue or question. For more information about Section 508, please visit the DoD Section 508 website. <https://dodcio.defense.gov/DoDSection508.aspx>.

# CONTENTS

**Part 1: Map of Non-Federal Sponsor MTG Permits**

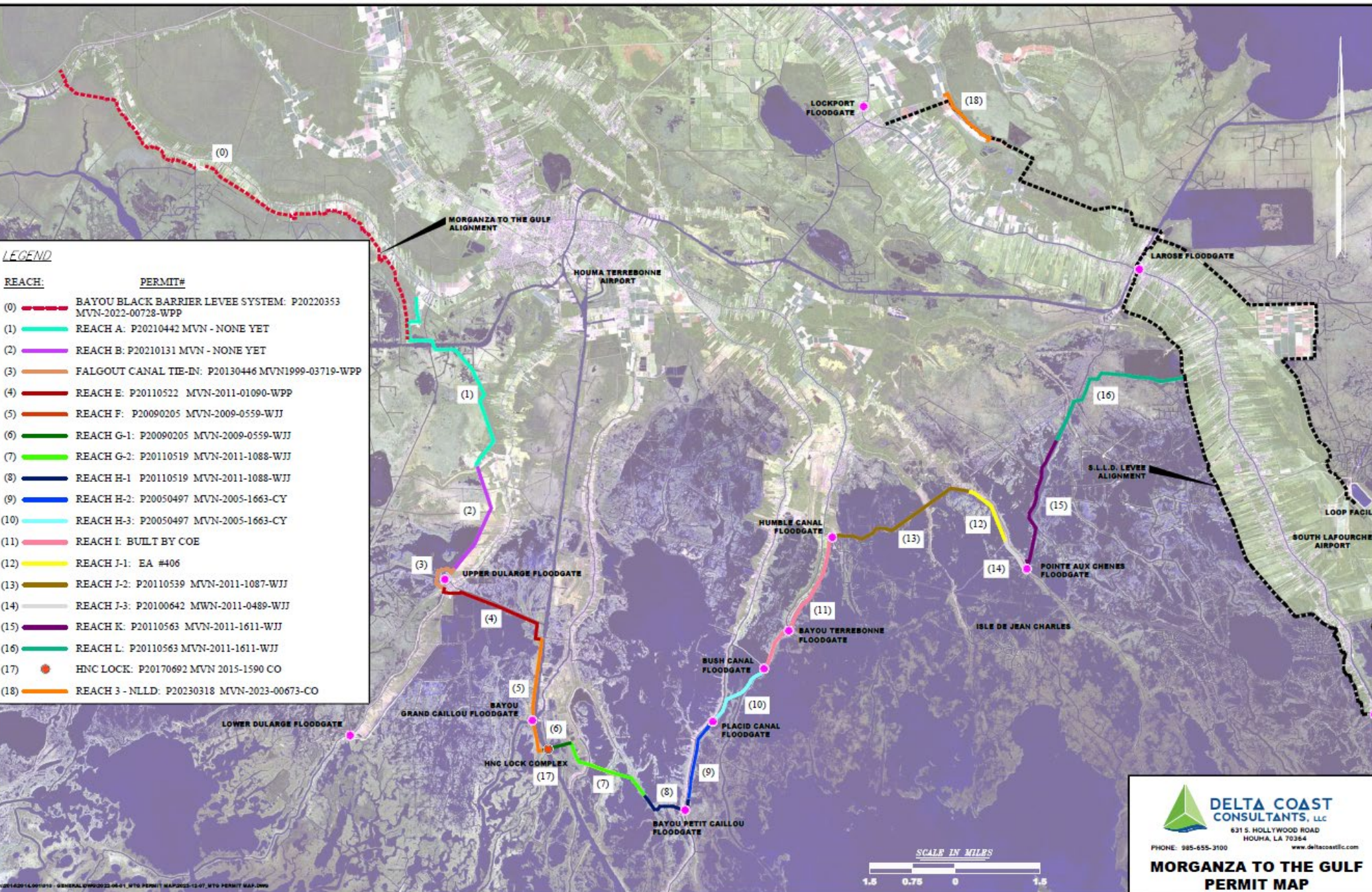
**Part 2: USACE Regulatory Fact Sheet, MTG Levee Reaches**

## **Part 1: Map of Non-Federal Sponsor MTG Permits**



**LEGEND**

REACH:	PERMIT#
(0)	BAYOU BLACK BARRIER LEVEE SYSTEM: P20220353 MVN-2022-00728-WPP
(1)	REACH A: P20210442 MVN - NONE YET
(2)	REACH B: P20210131 MVN - NONE YET
(3)	FALGOUT CANAL TIE-IN: P20130446 MVN1999-03719-WPP
(4)	REACH E: P20110522 MVN-2011-01090-WPP
(5)	REACH F: P20090205 MVN-2009-0559-WJJ
(6)	REACH G-1: P20090205 MVN-2009-0559-WJJ
(7)	REACH G-2: P20110519 MVN-2011-1088-WJJ
(8)	REACH H-1: P20110519 MVN-2011-1088-WJJ
(9)	REACH H-2: P20050497 MVN-2005-1663-CY
(10)	REACH H-3: P20050497 MVN-2005-1663-CY
(11)	REACH I: BUILT BY COE
(12)	REACH J-1: EA #406
(13)	REACH J-2: P20110539 MVN-2011-1087-WJJ
(14)	REACH J-3: P20100642 MVN-2011-0489-WJJ
(15)	REACH K: P20110563 MVN-2011-1611-WJJ
(16)	REACH L: P20110563 MVN-2011-1611-WJJ
(17)	HNC LOCK: P20170692 MVN 2015-1590 CO
(18)	REACH 3 - NLLD: P20230318 MVN-2023-00673-CO



**DELTA COAST CONSULTANTS, LLC**  
 631 S. HOLLYWOOD ROAD  
 HOUMA, LA 70364  
 PHONE: 985-655-3100  
 www.deltacoastllc.com

**MORGANZA TO THE GULF  
 PERMIT MAP**

P20142014.0011010 - ORIGINAL DWW2023-06-01, MTO PERMIT MAP2023-12-07, MTO PERMIT MAP.DWG

## **Part 2: USACE Regulatory Fact Sheet, MTG Levee Reaches**



Levee	Regulatory Permit #	Construction Status	Notes
Bayou Black Barrier Levee	MVN-2022-0728-WPP	Construction Complete	Cultural Resource Survey (CRS) under review by USACE. Section 106 Consultation letter under review by tribal and Section 106 partners for comment.
Reach A Segment 1	MVN-2021-0592-WLL	Construction Complete	Construction completed April 2025 under Emergency Permit issued September 2024. Permit conditions required Section 7 Review and CRS. CRS under review by USACE. Section 7 coordination ongoing with USFWS
Reach A Segment 4 & Segment 5	MVN-2021-0592-WLL	Design Complete	CRS under review by USACE. Section 7 coordination ongoing with USFWS
Reach B Levee	MVN-2016-0049-CQ	In Design	Administrative Order on Consent has been signed. Construction scheduled to start April 2026.
Reach E	MVN-2011-1090-WPP, MVN-2018-00910-WPP	Construction Complete	Mitigation and mitigation monitoring in progress. Year 1 Monitoring Report in progress.
Reach F	MVN-2009-0559-WJJ	Construction Complete	Mitigation Monitoring in progress. Permit modification in progress that would bring permit into full compliance and document excess mitigation.
HNC Lock	MVN-2015-1590-CO	In Construction	Permit modification issued in June 2025. Mitigation, mitigation monitoring and structure construction in progress
Reach G-1	MVN-2009-0559-WJJ	Construction Complete	Mitigation Monitoring in progress. Permit modification in progress that would bring permit into full compliance and document excess mitigation.
Reach G-2	MVN-2011-1088-WJJ	Construction Complete	Permit in compliance. Year 5 mitigation monitoring report meets the Year 5 criteria.
Reach H-1	MVN-2011-1088-WJJ	Construction Complete	Permit in compliance. Year 5 mitigation monitoring report meets the Year 5 criteria.
Reach H-2	MVN-2005-1663-CY	Construction Complete	Mitigation and mitigation monitoring in progress.
Reach H-3	MVN-2005-1663-CY	Construction Complete	Mitigation and mitigation monitoring in progress.
Reach I (Lower)	MVN-2024-00365-WPP	In Design	Permit application withdrawn until design progresses past 10%
Reach I (Upper)	MVN-2024-00365-WPP	In Design	Permit application withdrawn until design progresses past 10%
Reach J-2	MVN-2011-1087-WJJ, MVN-2012-0330-WJJ	Construction Complete	In Compliance. Year 5 mitigation monitoring met requirements.
Reach J-1	Built under EA#406	Construction Complete	FONSI Signed 2005. Construction complete by MVN.
Reach J-3	MVN-2010-1631-WJJ, MVN-2011-0489-WJJ	Construction Complete	In Compliance. Year 5 mitigation monitoring met requirements.
Reach K	MVN-2011-1644-WJJ/WQQ, MVN-2024-00365-WPP	In Construction	2011 permit mitigation monitoring in progress. 2024 permit pending revised permit details.
Reach L	MVN-2011-1644-WJJ/WQQ, MVN-2024-00365-WPP	In Construction	2011 permit mitigation monitoring in progress. 2024 permit pending revised permit details.